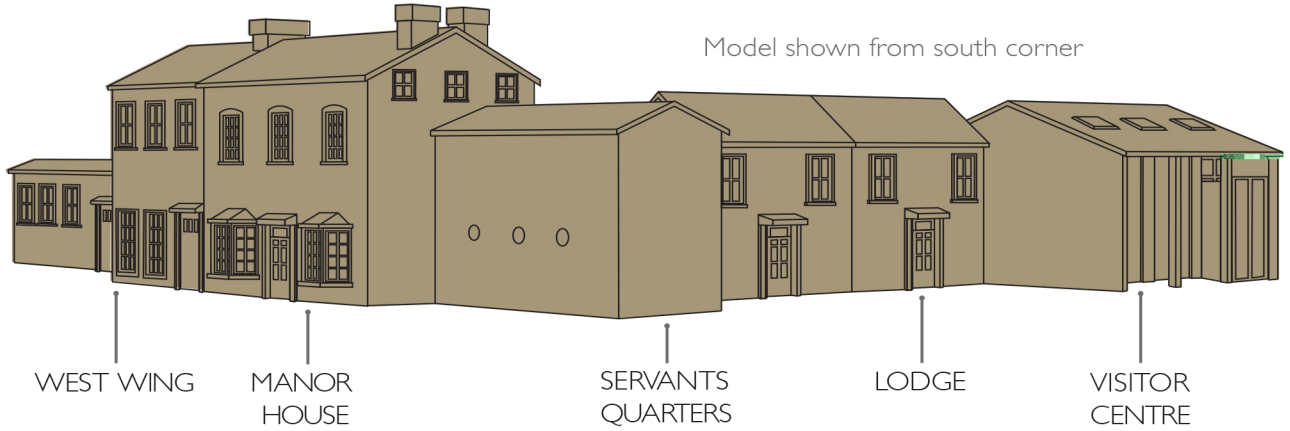




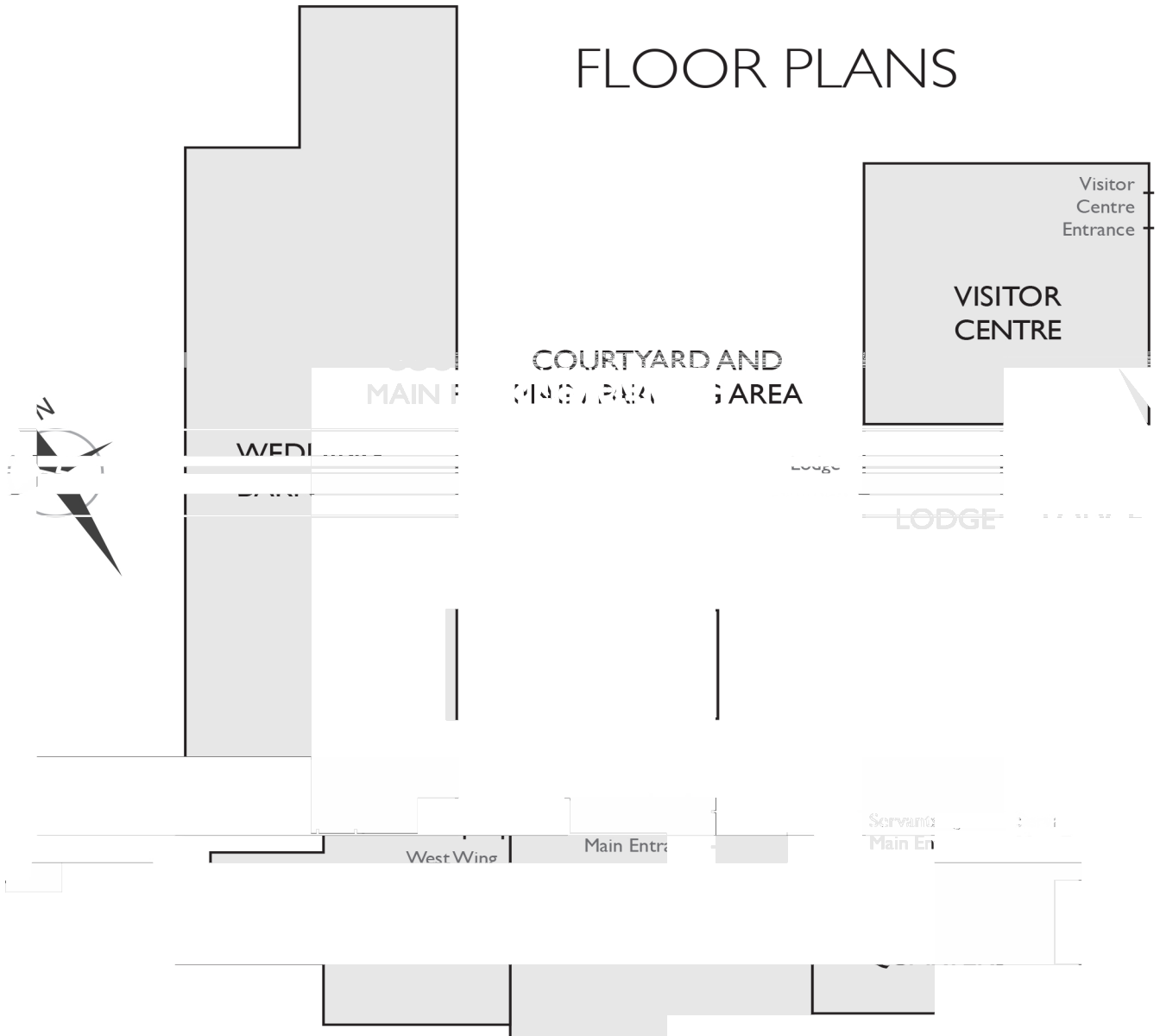
HORNINGTON

MANOR

Yorkshire



FLOOR PLANS

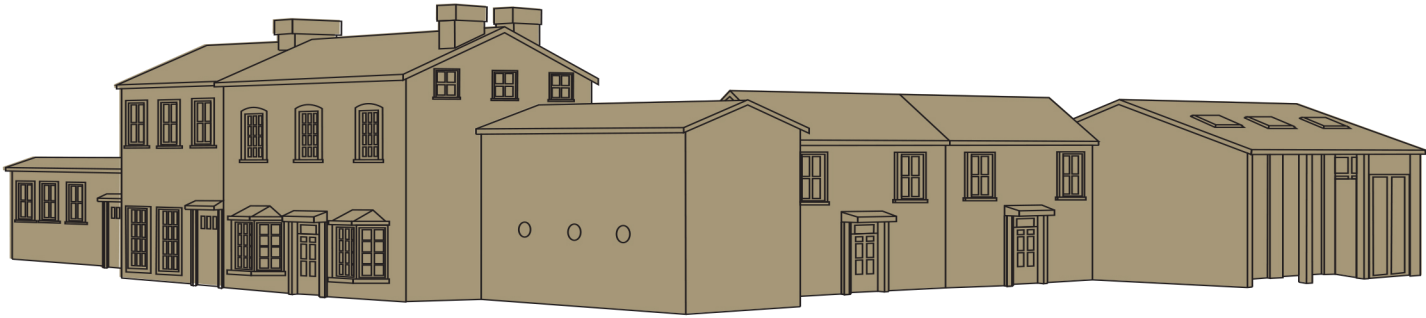




HORNINGTON

MANOR

Yorkshire



CONTENTS

The Stables

Ground floor.....3

West Wing

Ground floor.....3

First floor.....4

Manor House

Ground floor.....5

First floor.....6

Second floor.....7

Servants Quarters

Ground floor.....8

First floor.....9

Lodge

Ground floor.....10

First floor.....11

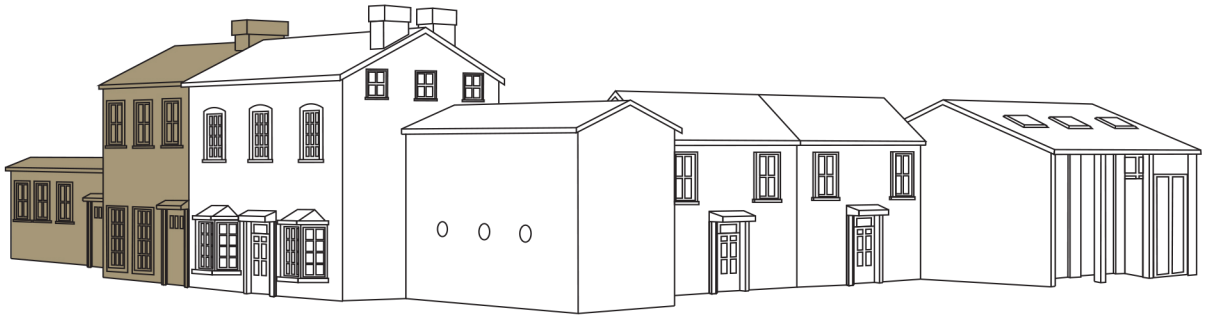
Room overviews.....12



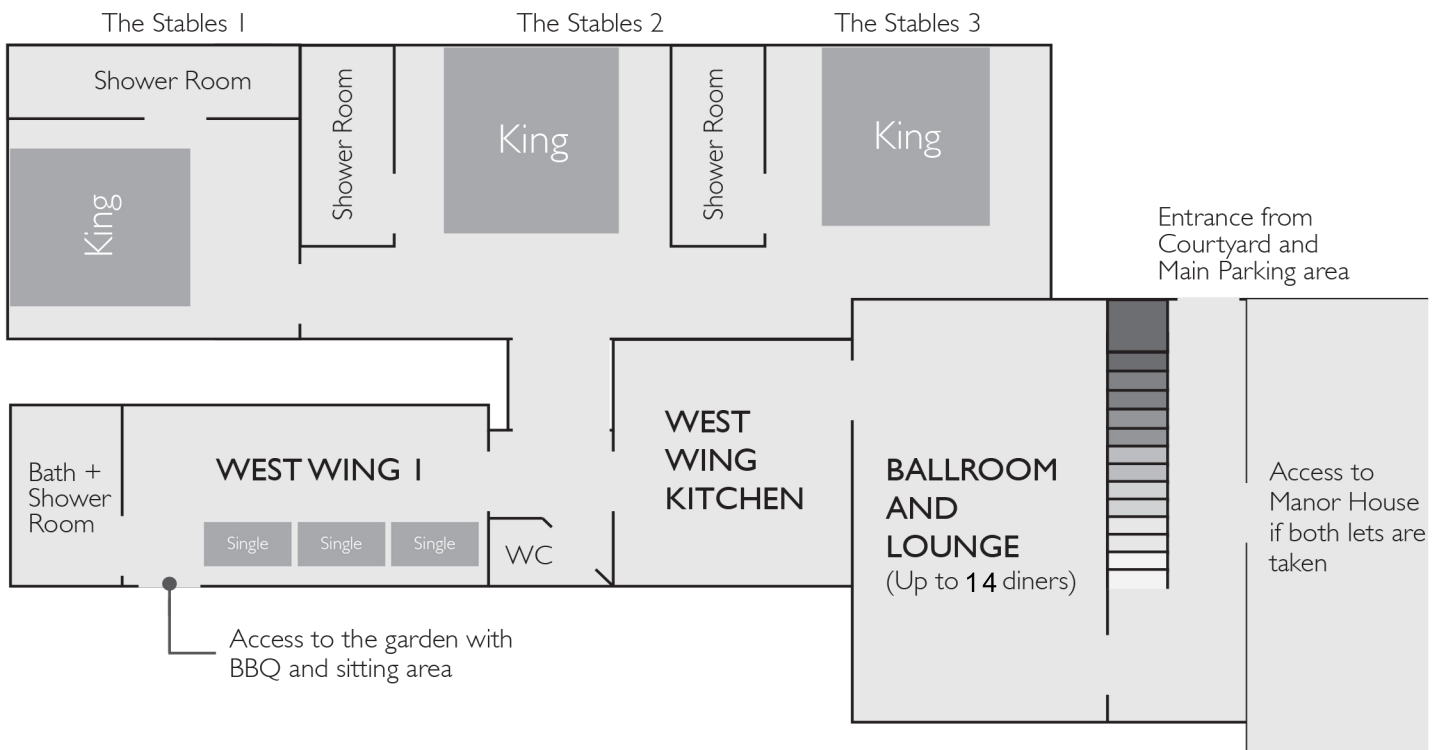
HORNINGTON

MANOR

Yorkshire



The Stables & West Wing Ground Floor





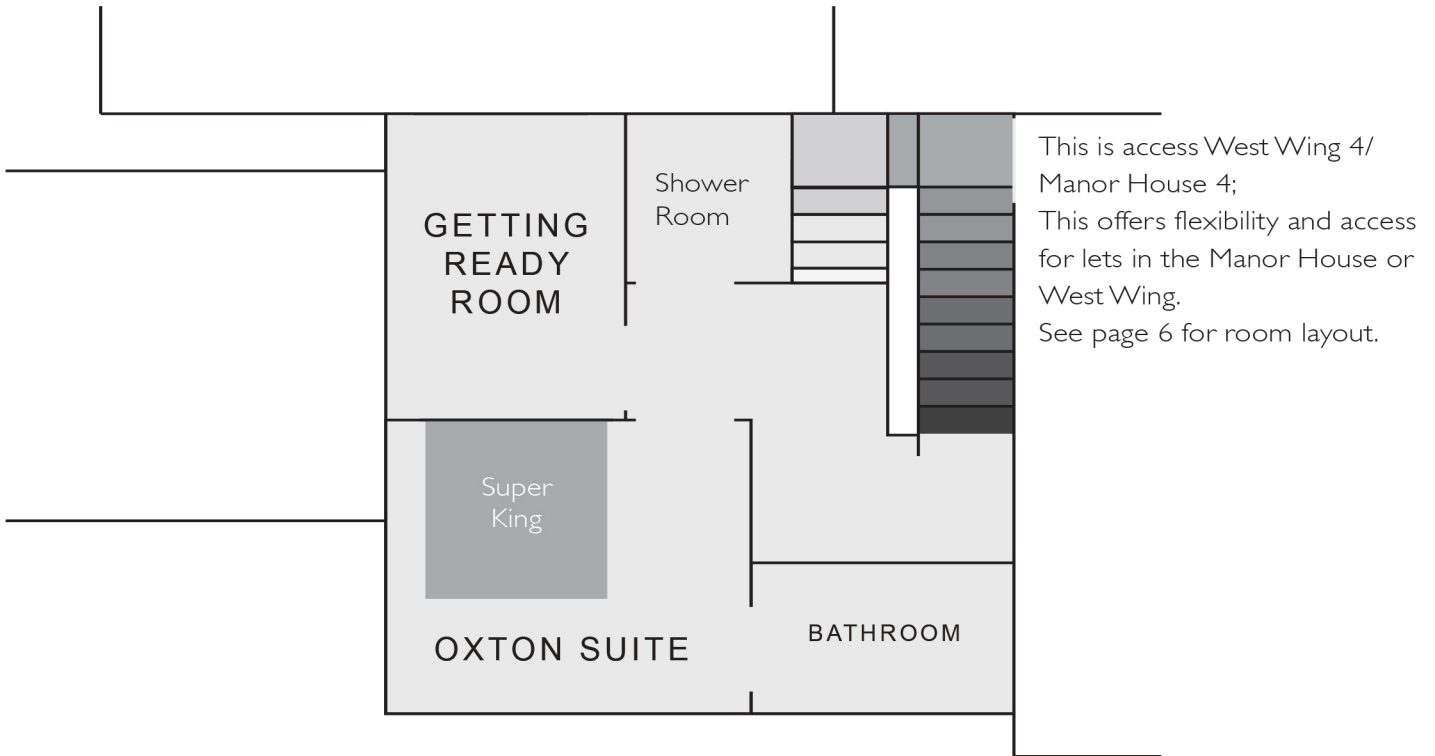
HORNINGTON

MANOR

Yorkshire



West Wing First Floor





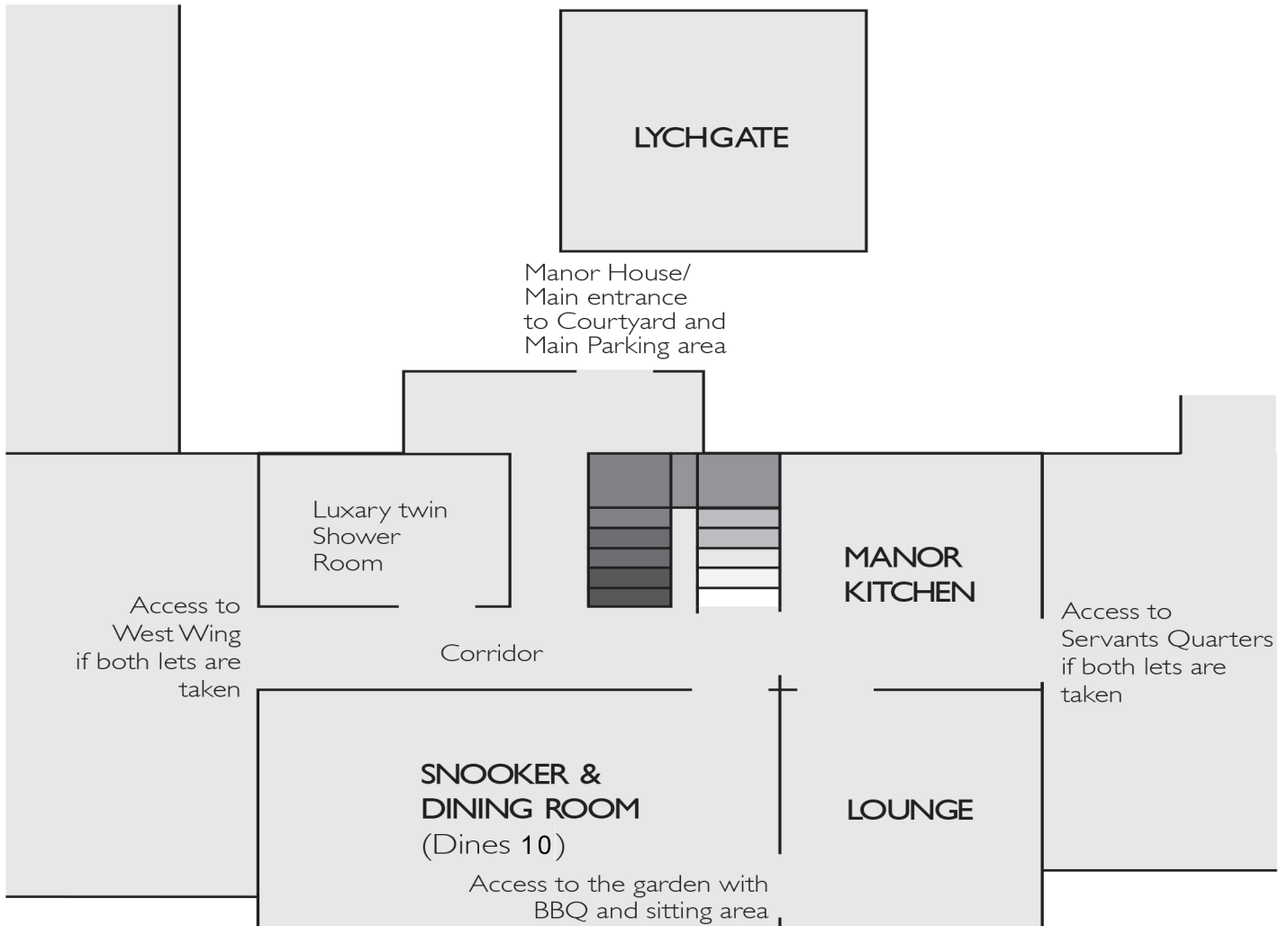
HORNINGTON

MANOR

Yorkshire



Manor House Ground Floor





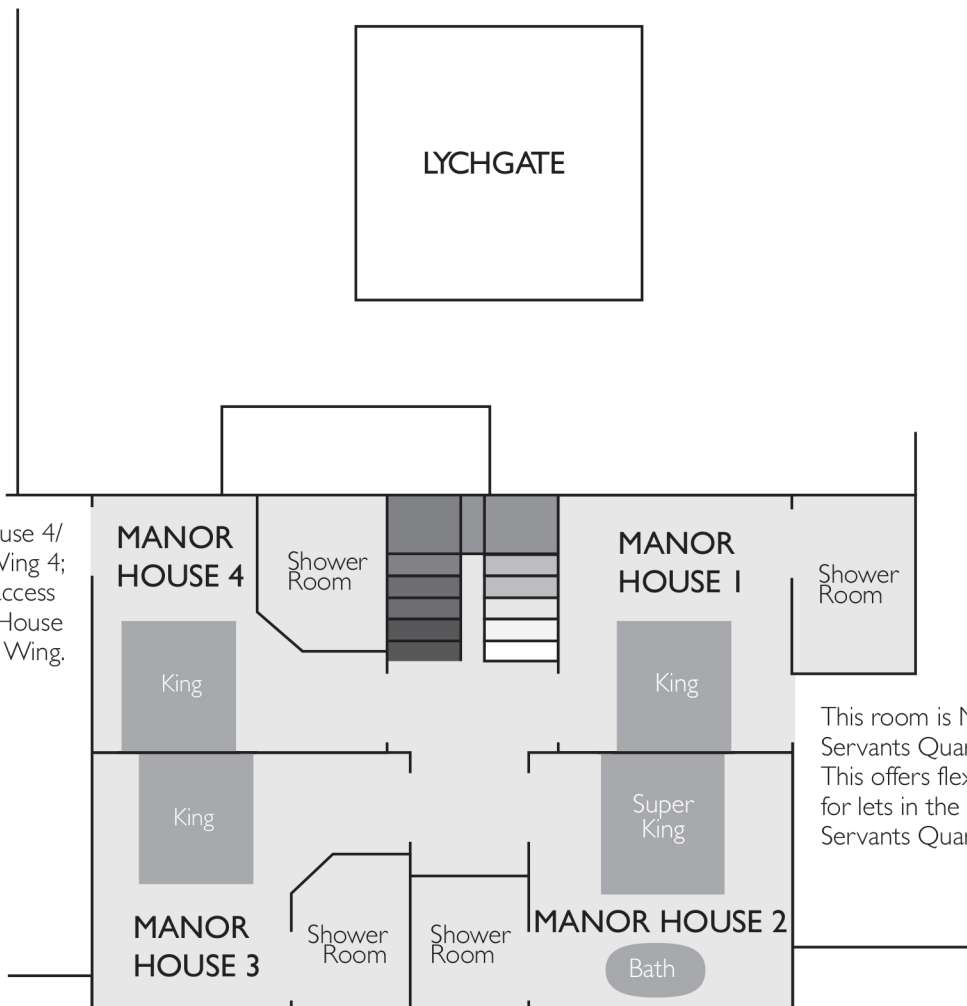
HORNINGTON

MANOR

Yorkshire



Manor House First Floor



This room is Manor House 4/
West Wing 4;
This offers flexibility and access
for lets in the Manor House
or West Wing.

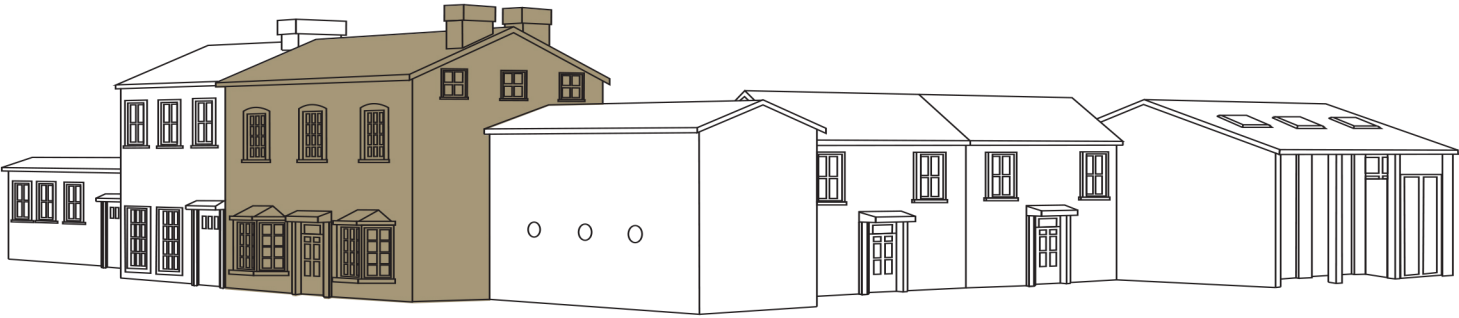
This room is Manor House 1/
Servants Quarters 5;
This offers flexibility and access
for lets in the Manor House or
Servants Quarters.



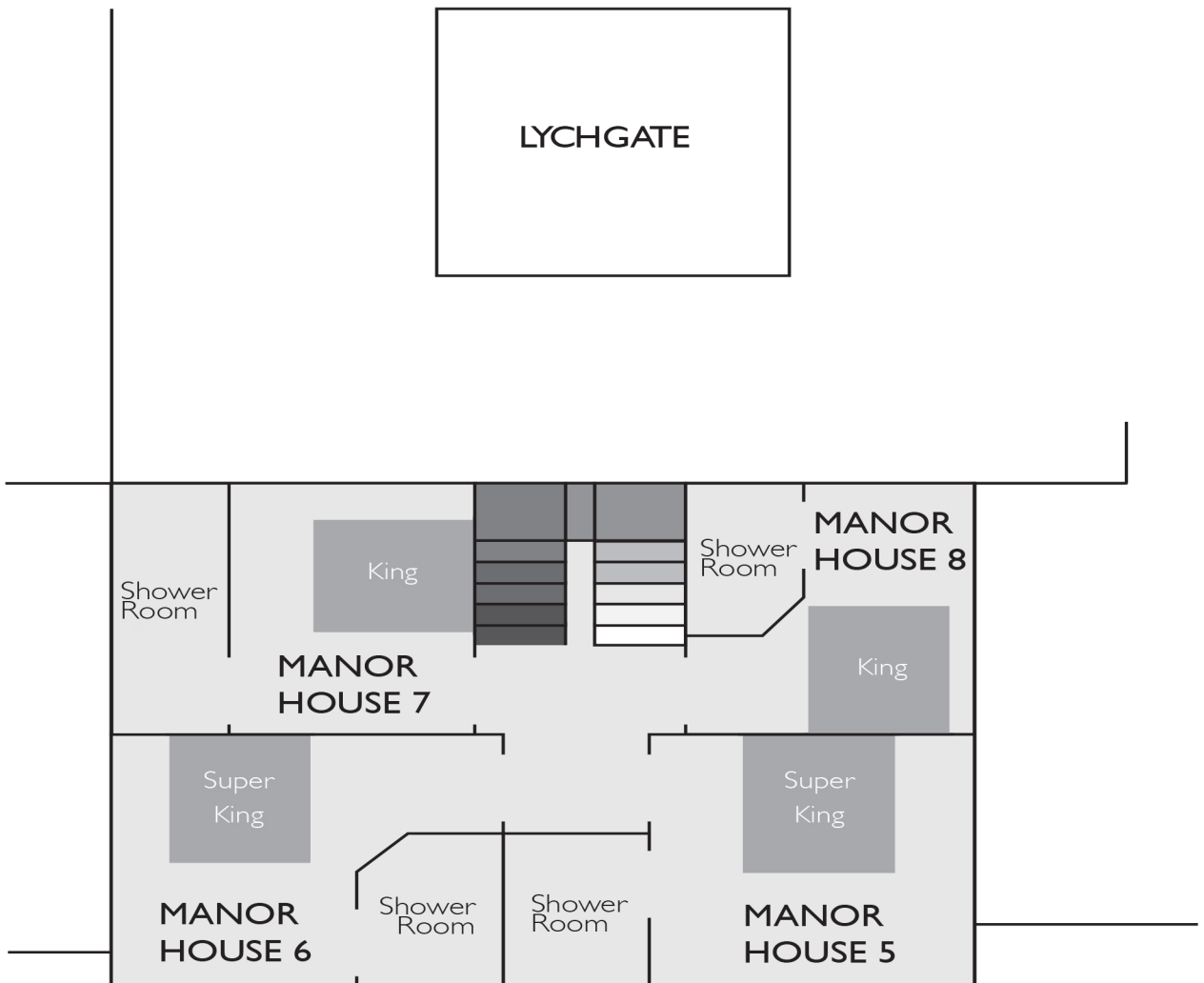
HORNINGTON

MANOR

Yorkshire



Manor House Second Floor

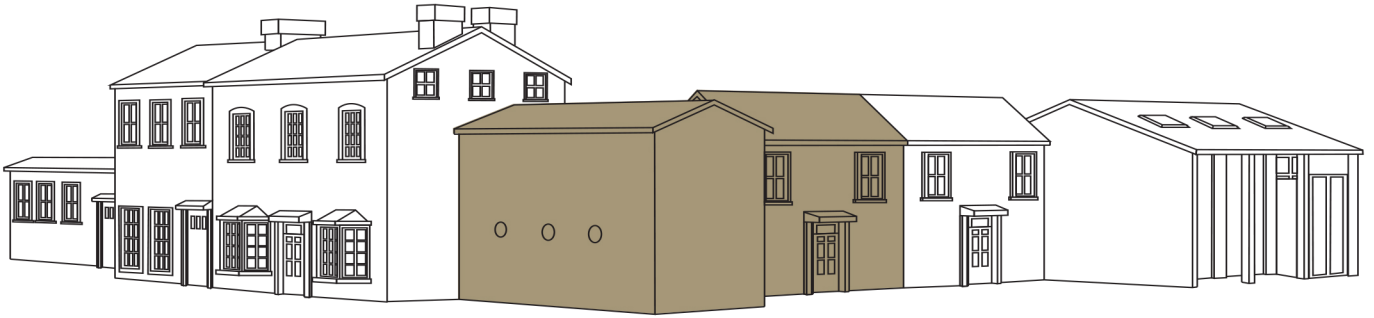




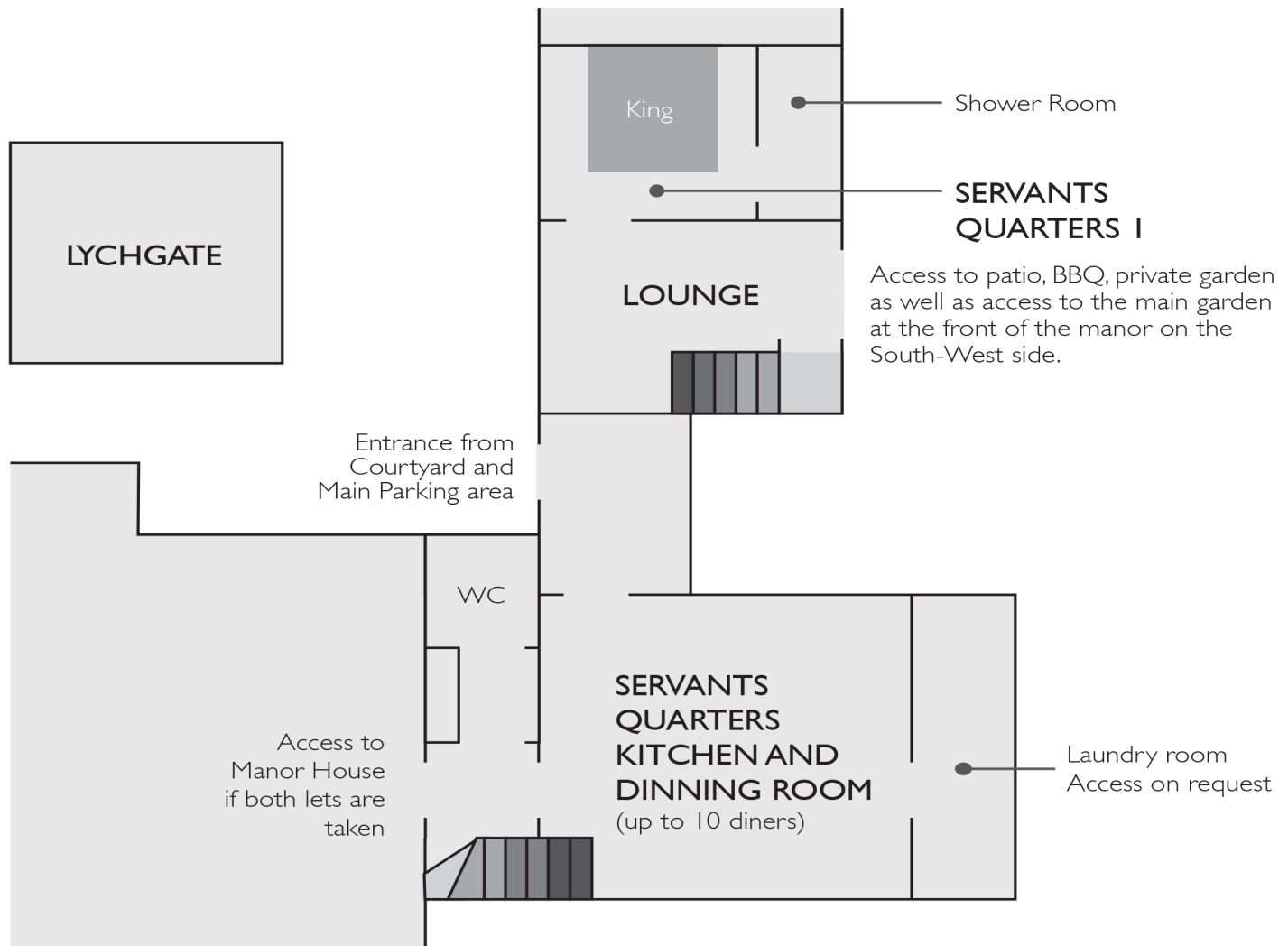
HORNINGTON

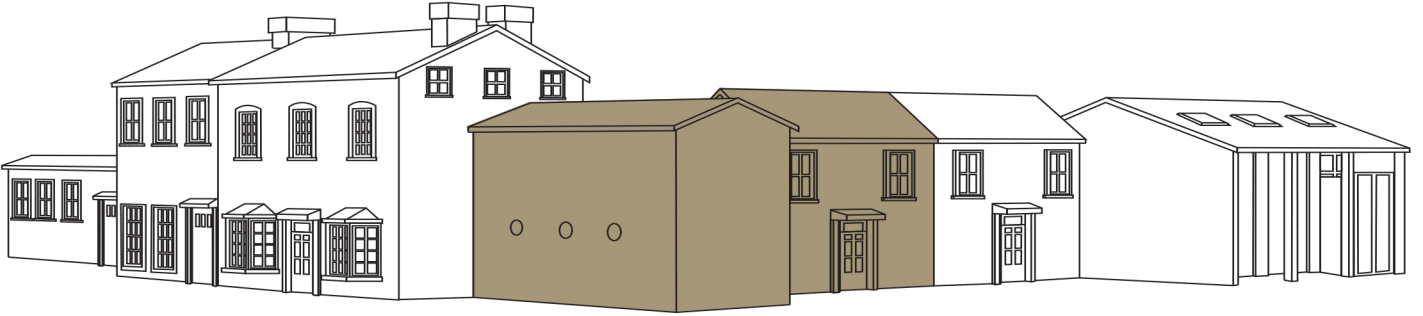
MANOR

Yorkshire

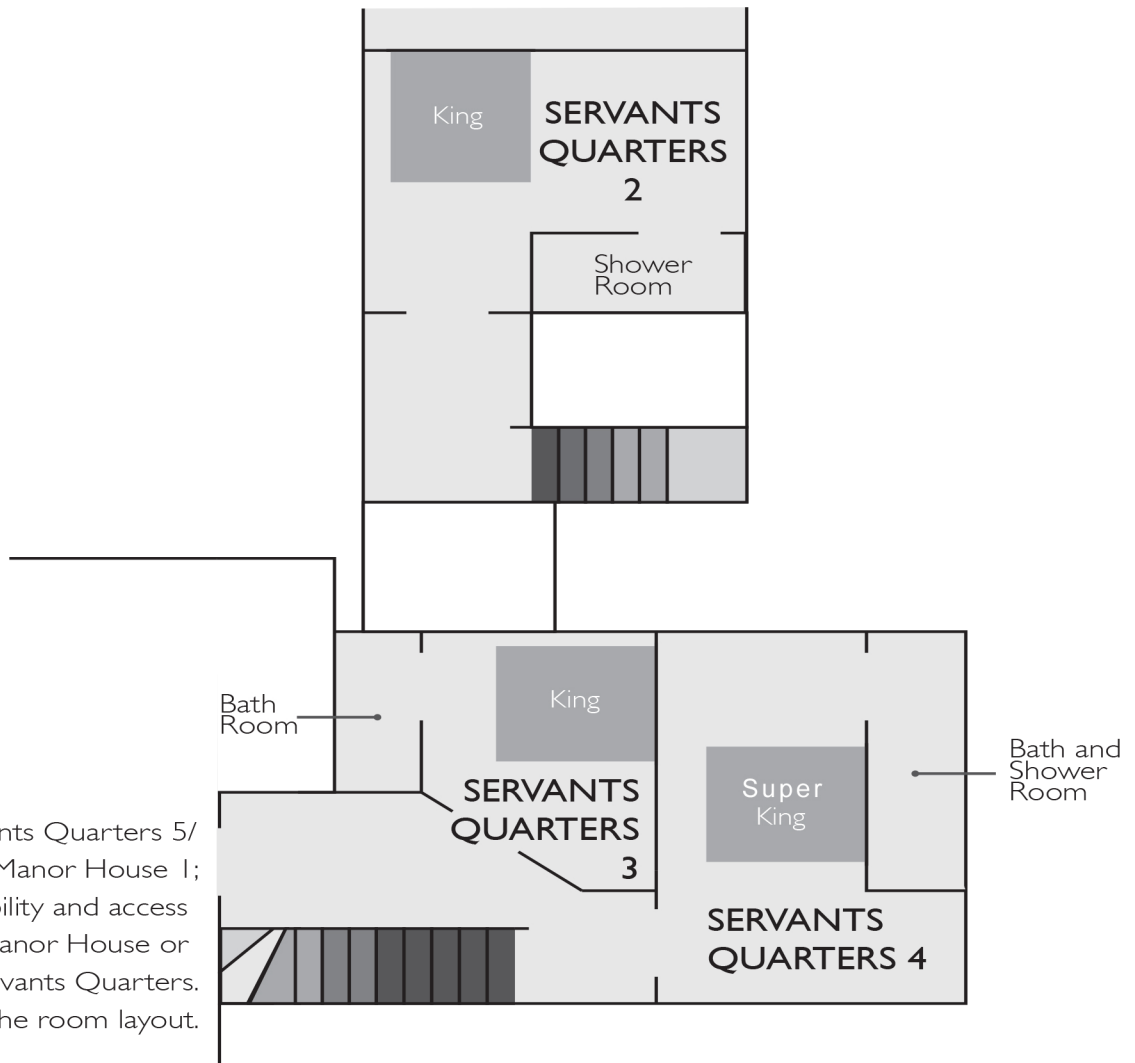


Servants Quarters Ground Floor





Servants Quarters First Floor



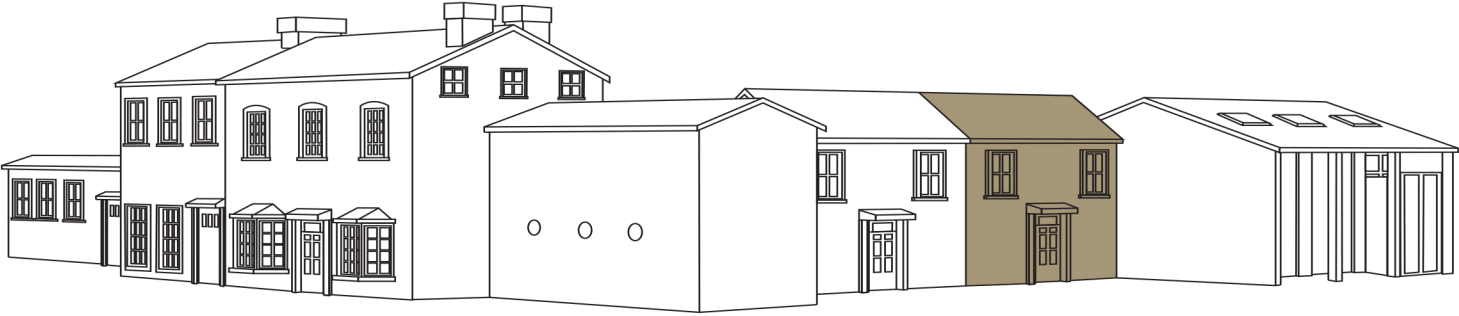
This is access to Servants Quarters 5/
 Manor House 1;
 This offers flexibility and access
 for lets in the Manor House or
 Servants Quarters.
 Also see page 6 for the room layout.



HORNINGTON

MANOR

Yorkshire



Lodge Ground Floor

Access to visitor centre on request;
Available for hire for parties, corporate
functions and other recreational activities.

Entrance from
Courtyard and
Main Parking area

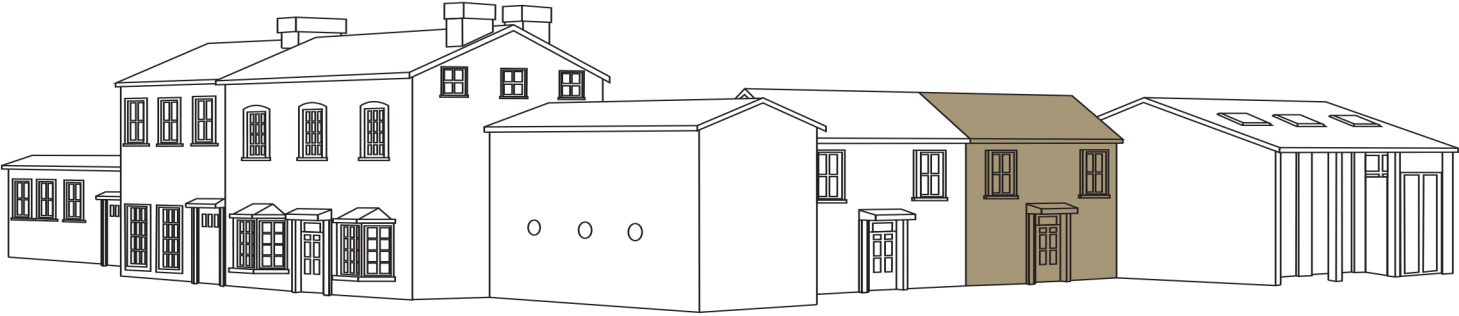
Bath +
Shower

LOUNGE AND
KITCHEN

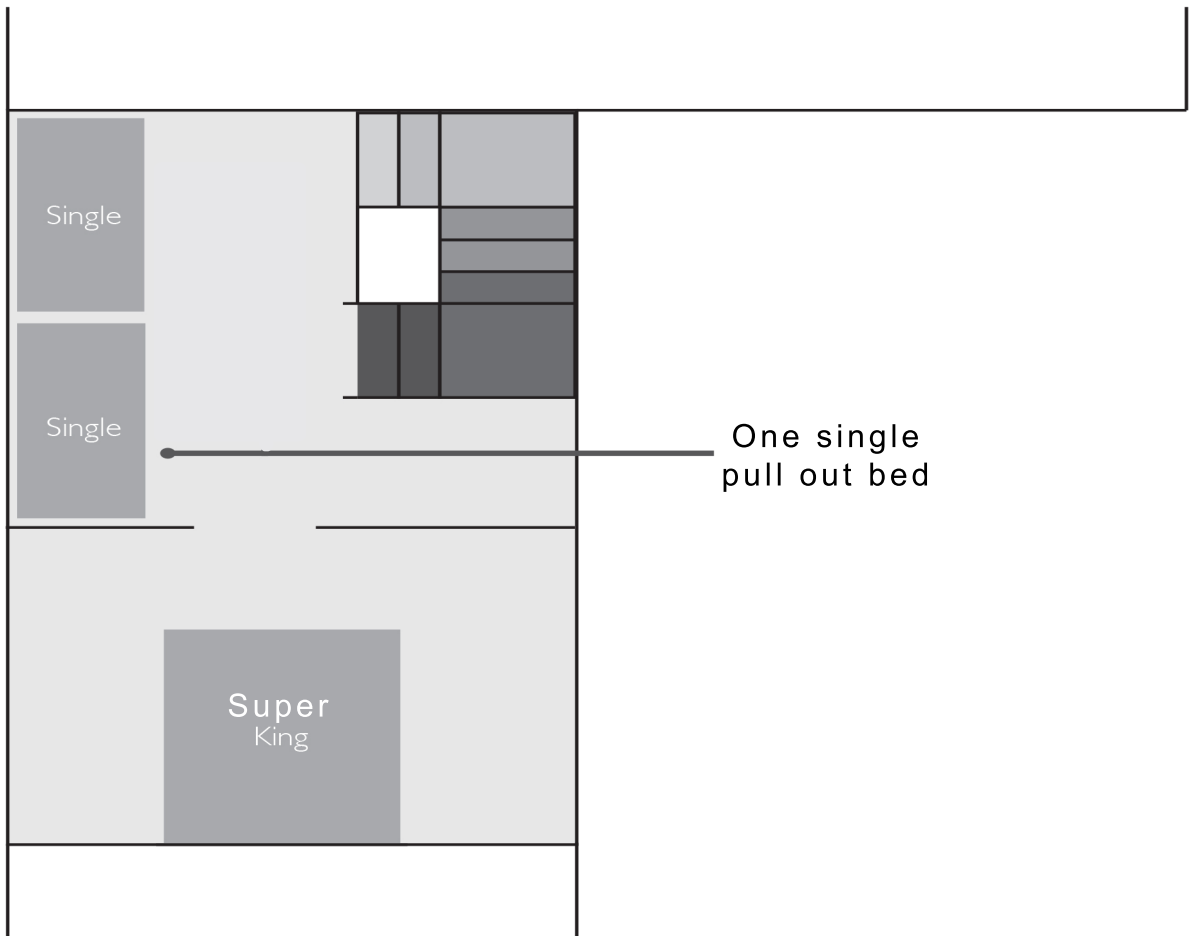
Access to patio, BBQ, private garden
as well as access to the main garden
at the front of the manor on the
South-West side.



HORNINGTON
MANOR
Yorkshire



Lodge
First Floor



H
HORNINGTON
MANOR

Yorkshire



Hornington Manor lets Overview

Please Note - All bedrooms have en suite bathrooms as standard.

The Stables

Sleeps **3-5**; 3 King bedrooms accessed via the West Wing or Courtyard. All bedrooms are on the ground floor for ease of access.

West Wing

Sleeps 3-6; 1 Super King, 1 Single **triple** bedroom

1 Fully equipped kitchen, 1 Living area with large antique table for group dining up to **14** guests.

West Wing 4/Manor house 4 is a King room that can also be used to accommodate 2 extra people (making 10 available sleeps total).

Manor House

Sleeps 8-16, **3** Super-king bedrooms, **5** King bedrooms, 1 Fully equipped kitchen, 1 Lounge, 1 Snooker / dining room for group dining up to 10 guests, 1 Luxury twin shower room.

Servants Quarters

Sleeps **4-9** 4 King bedrooms, 1 Fully equipped kitchen with dining table seats up to 10 guests
1 lounge area.

Lodge

Sleep **2-5** 1 **Super King** bedroom, 1 Landing room 2 singles

1 Fully equipped kitchen / living area.

All lets

Sleeps **41**, Rooms between the Manor House, West Wing, Servants Quarters and Lodge open up allowing the Manor to become one large house, linking communal areas and bed rooms.

From the ground floor in each section of the house there is access outside to patios, BBQs, and private gardens, see ground floor plans for each section of the Manor for access doors.

More informations found at <http://www.horningtonmanorholidaylets.co.uk>