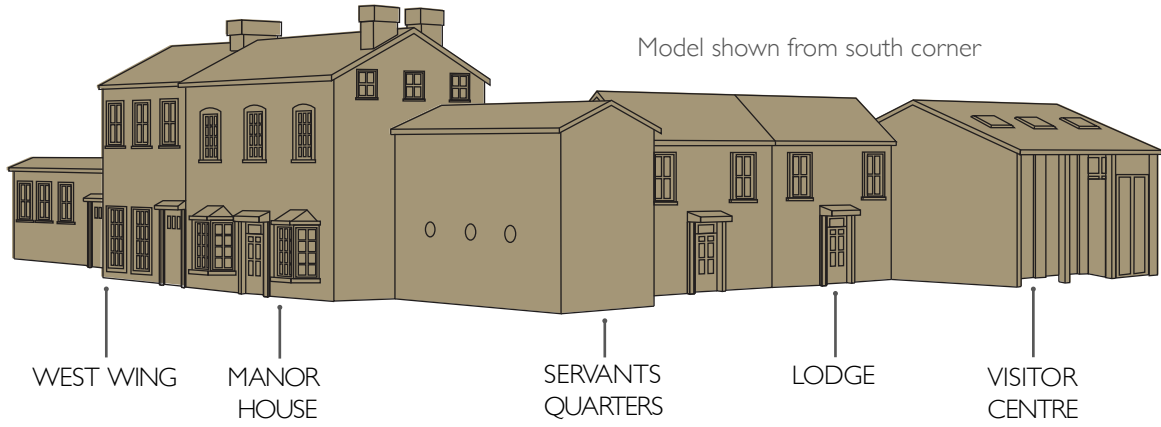


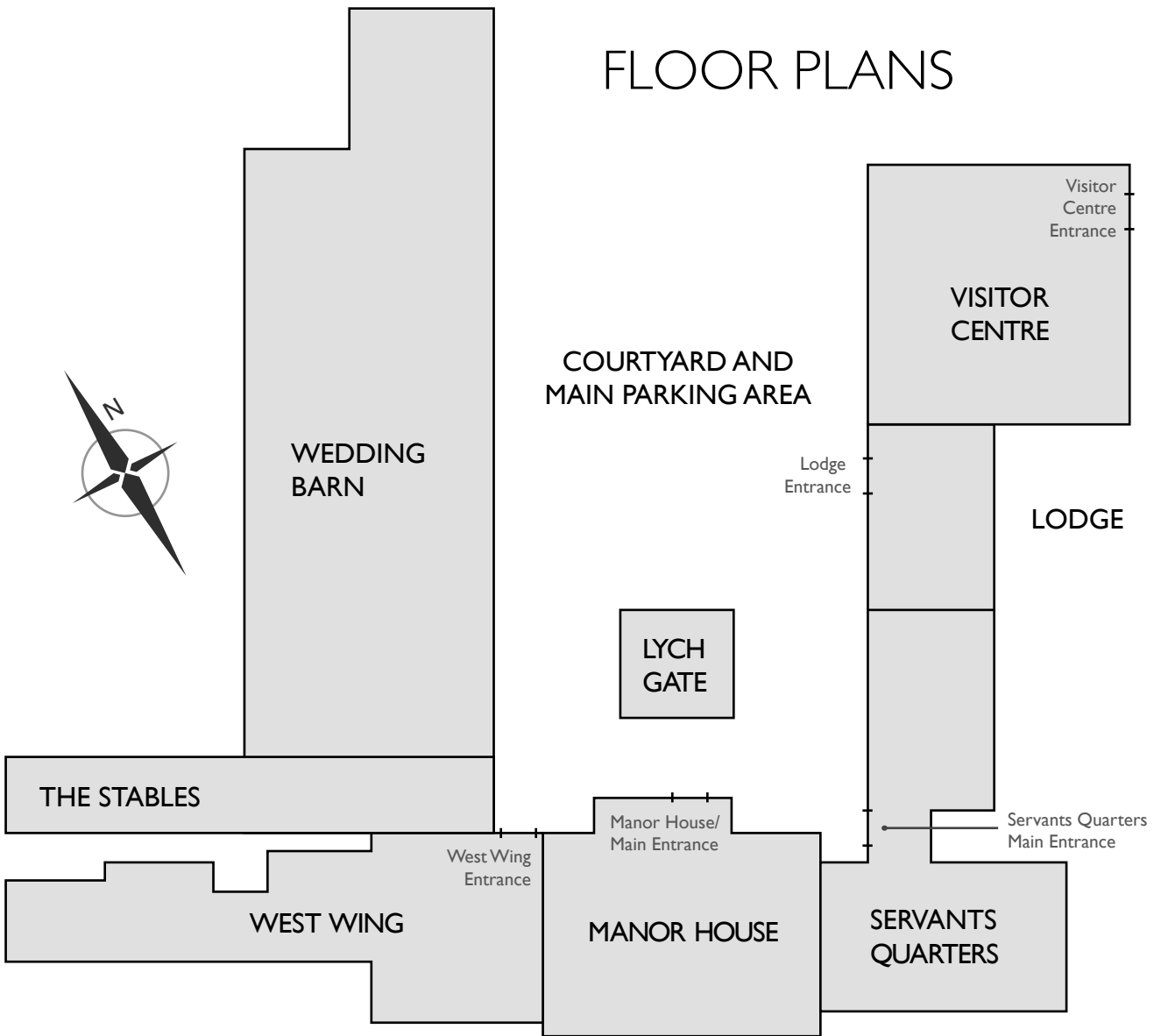


# HORNINGTON MANOR

*Yorkshire*



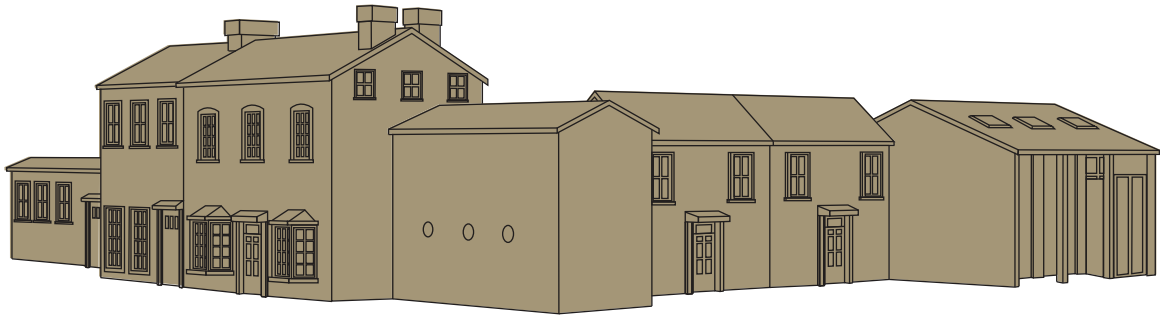
## FLOOR PLANS





HORNINGTON  
MANOR

*Yorkshire*



## CONTENTS

### The Stables

Ground floor.....3

### West Wing

Ground floor.....3

First floor.....4

### Manor House

Ground floor.....5

First floor.....6

Second floor.....7

### Servants Quarters

Ground floor.....8

First floor.....9

### Lodge

Ground floor.....10

First floor.....11

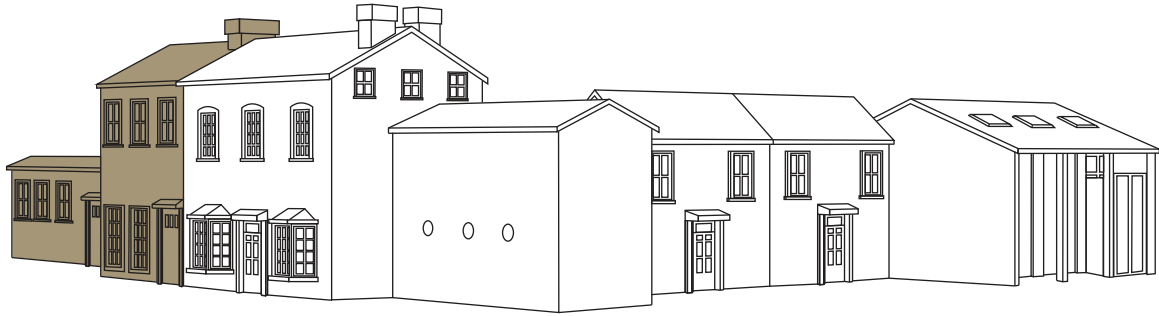
Room overviews.....12



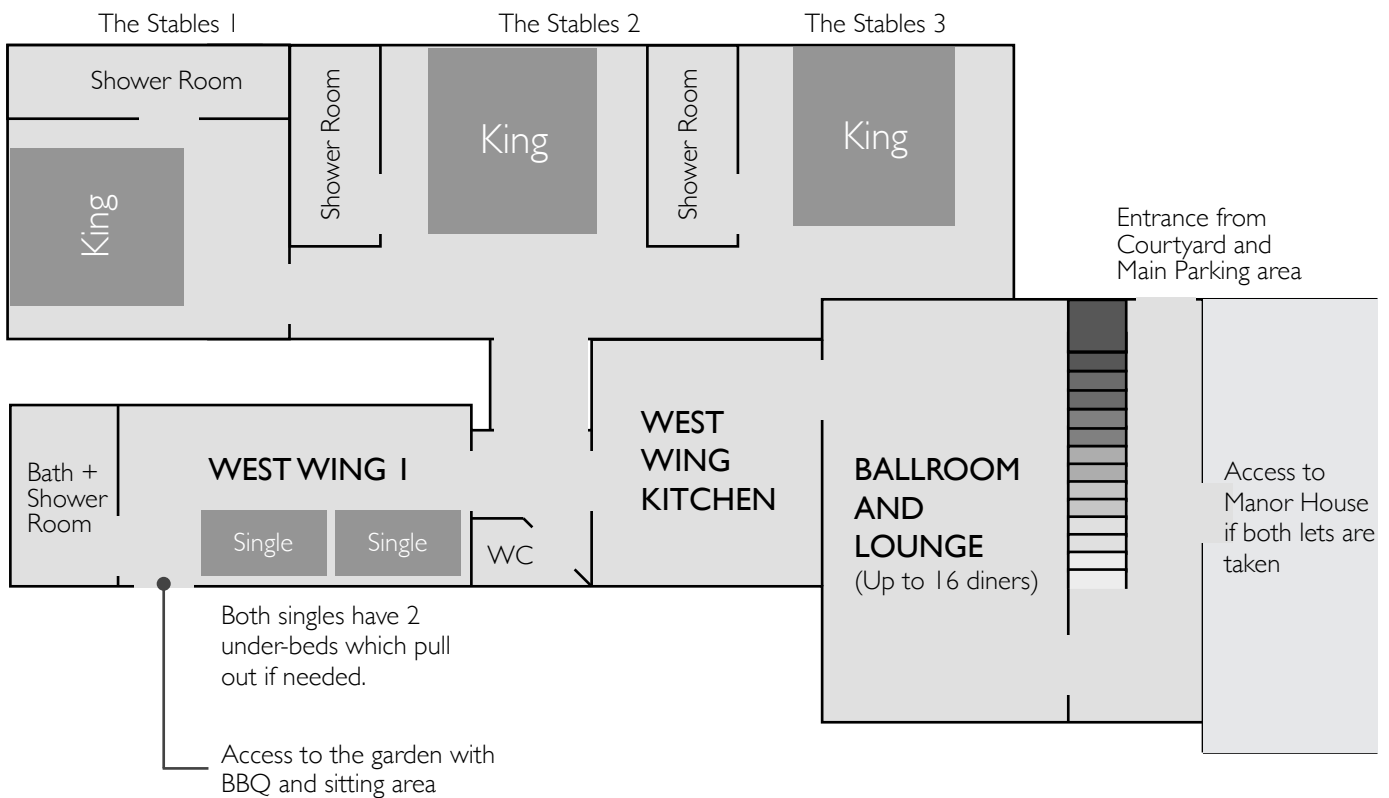
# HORNINGTON

MANOR

*Yorkshire*



## The Stables & West Wing Ground Floor

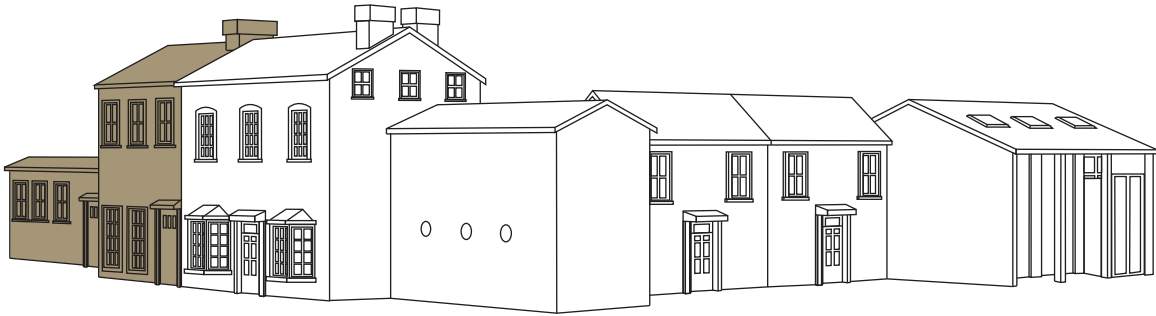




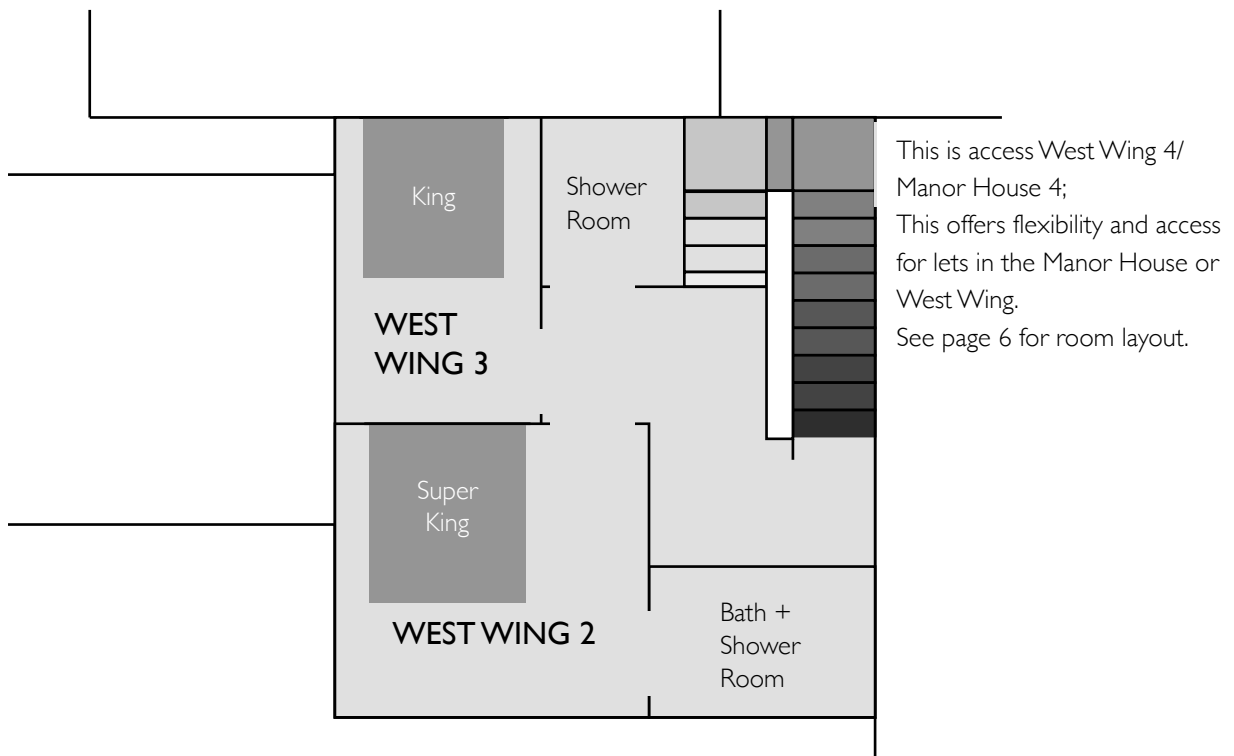
# HORNINGTON

MANOR

*Yorkshire*



## West Wing First Floor



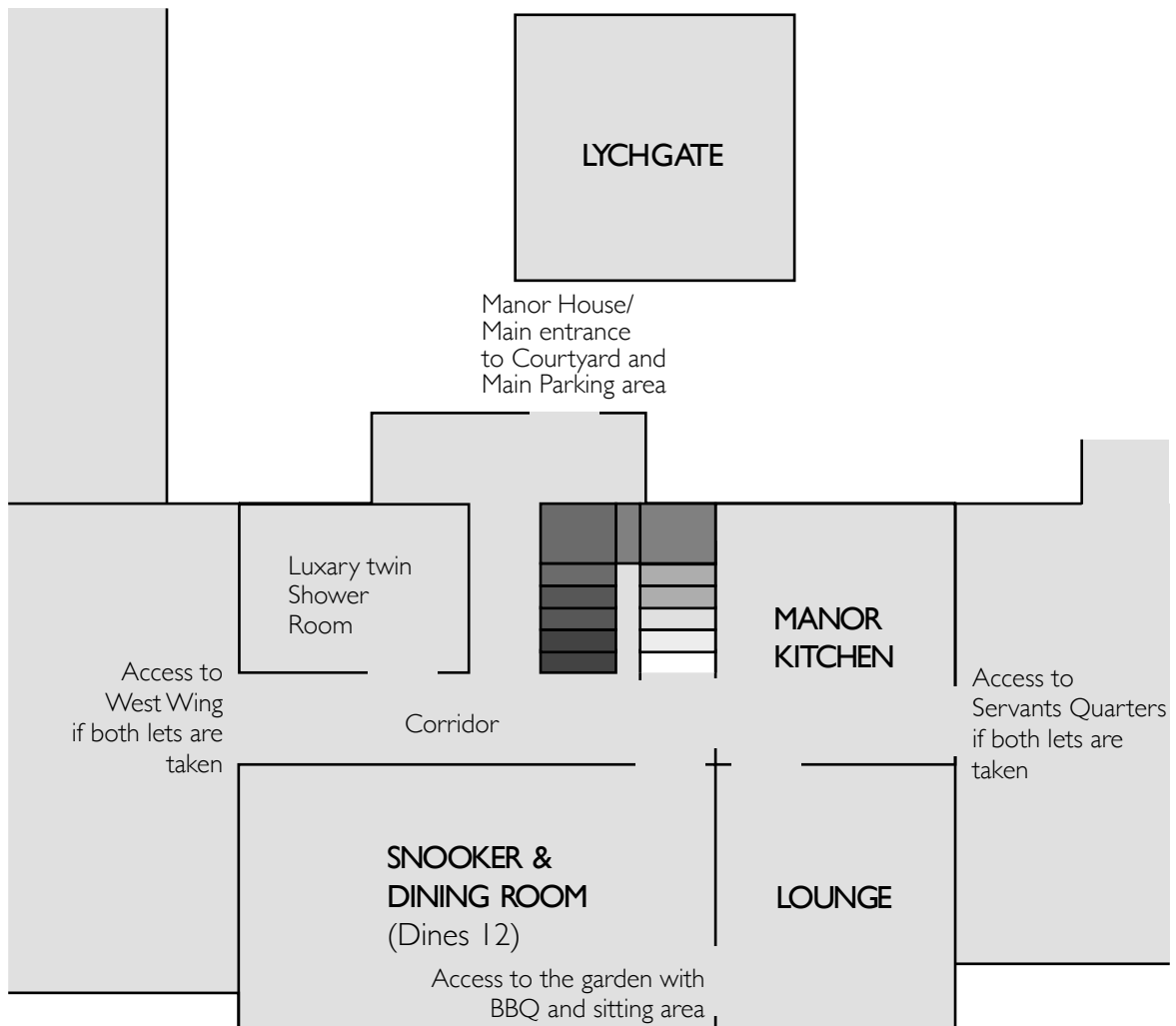


# HORNINGTON MANOR

*Yorkshire*



## Manor House Ground Floor



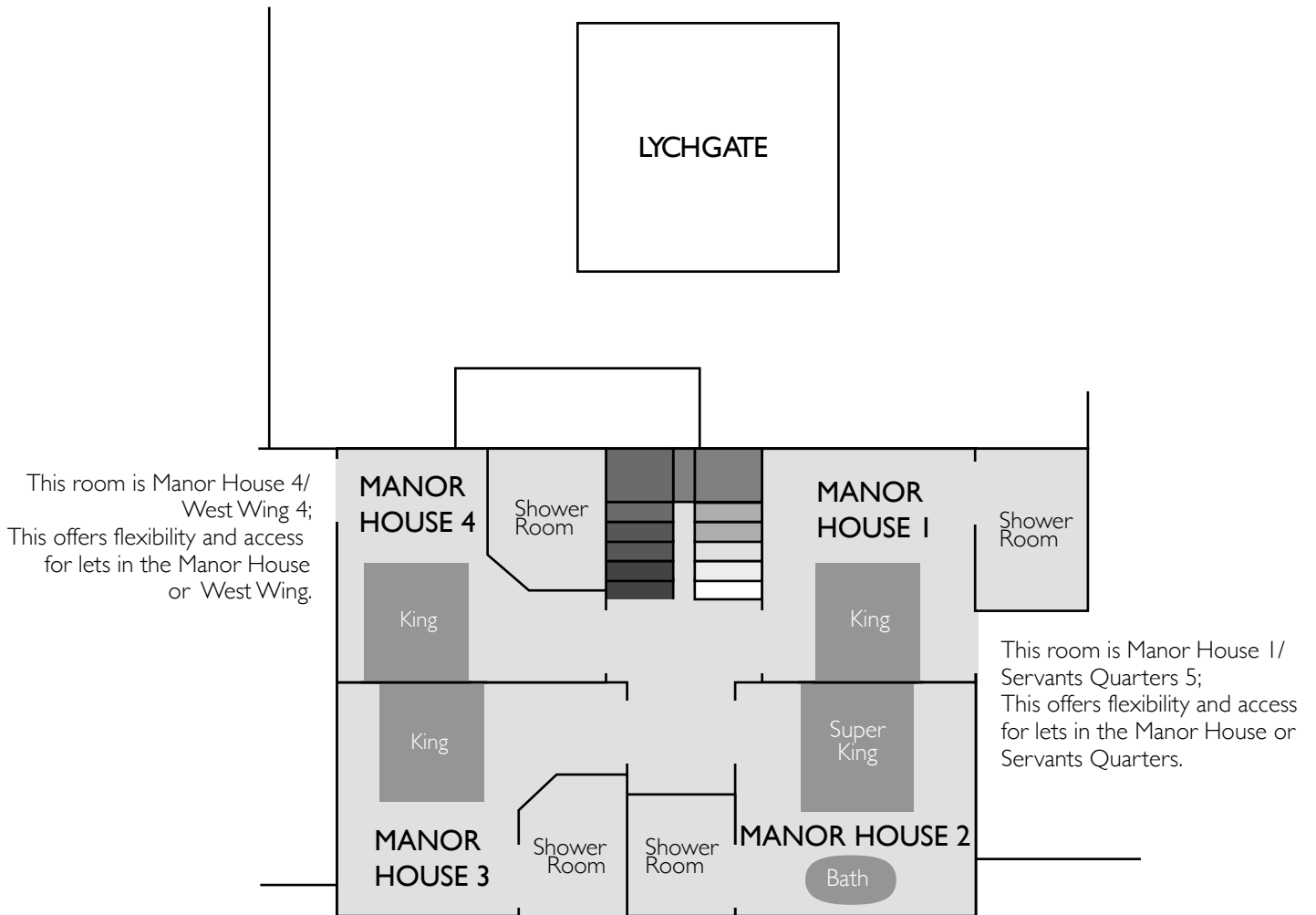


# HORNINGTON MANOR

*Yorkshire*



## Manor House First Floor



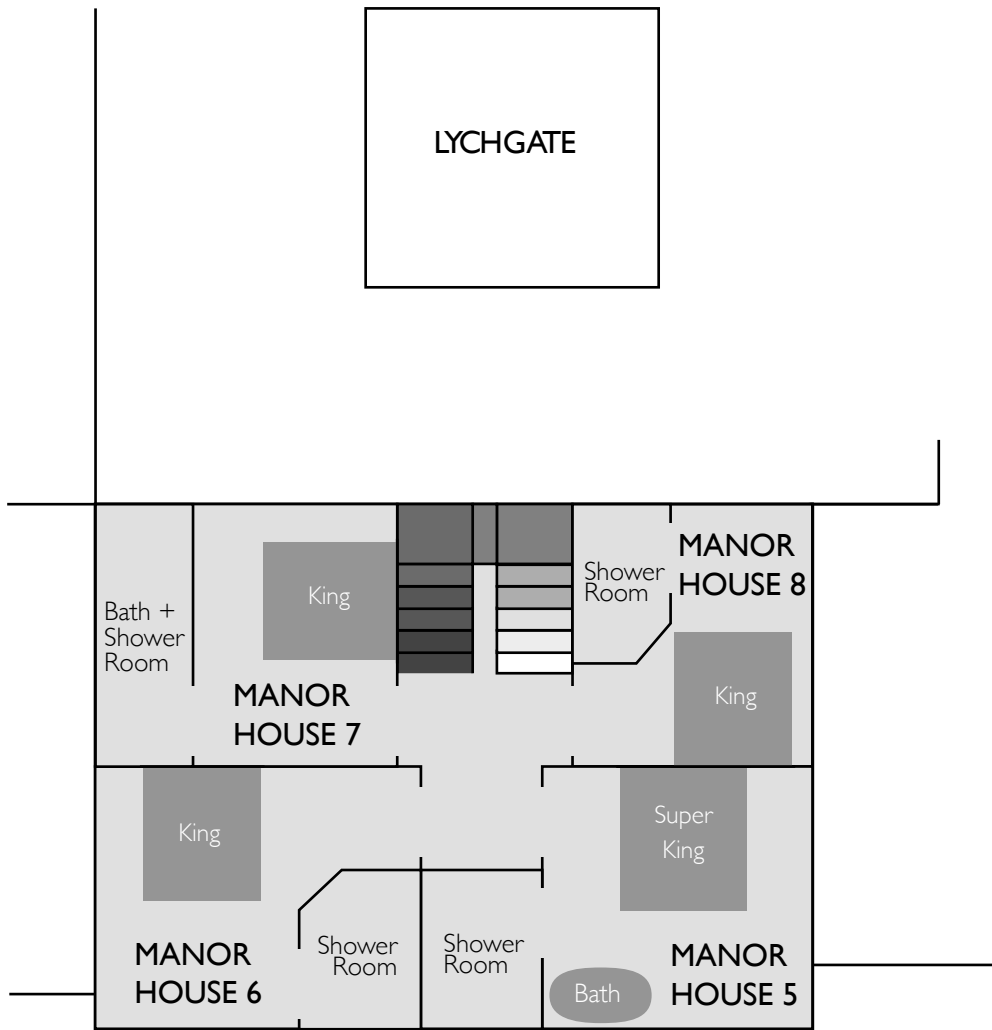


**HORNINGTON  
MANOR**

*Yorkshire*



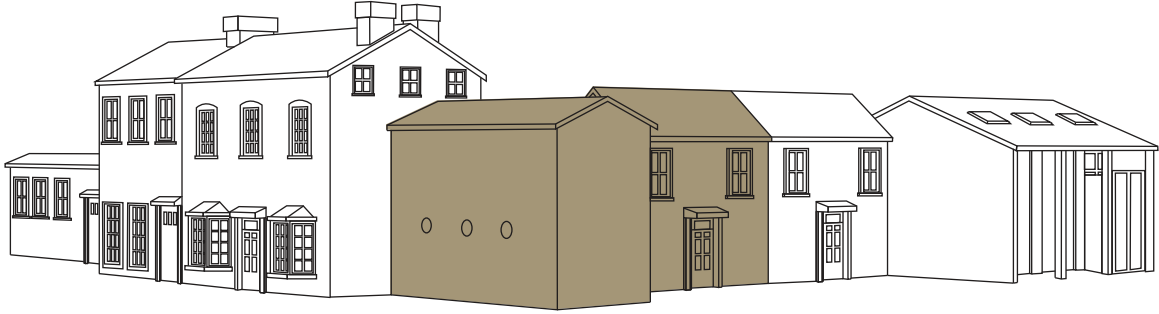
# Manor House Second Floor



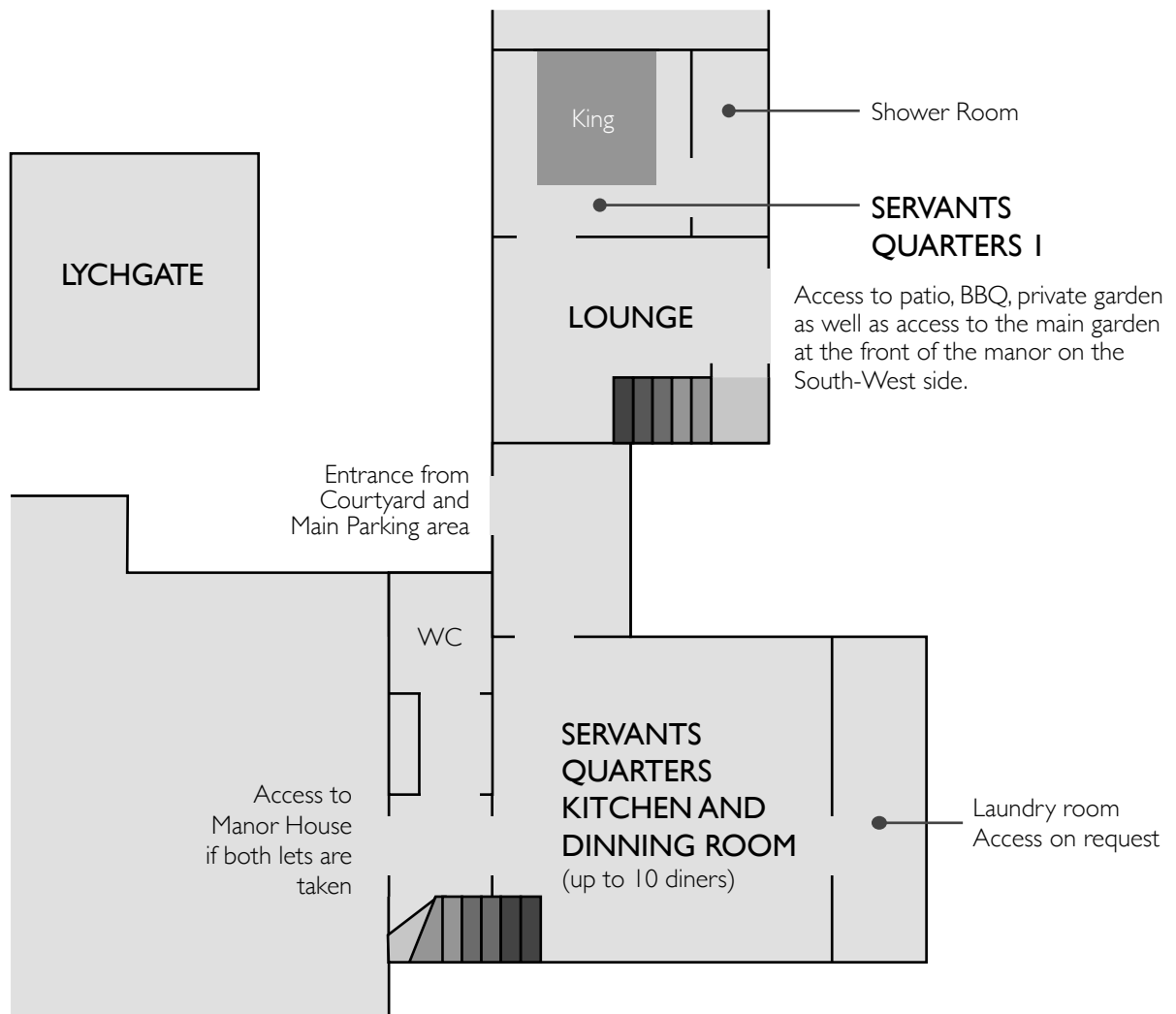


# HORNINGTON MANOR

*Yorkshire*



## Servants Quarters Ground Floor

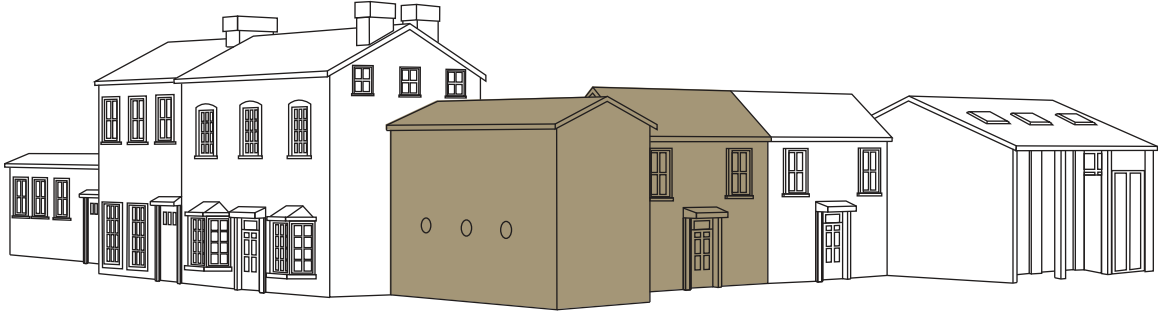




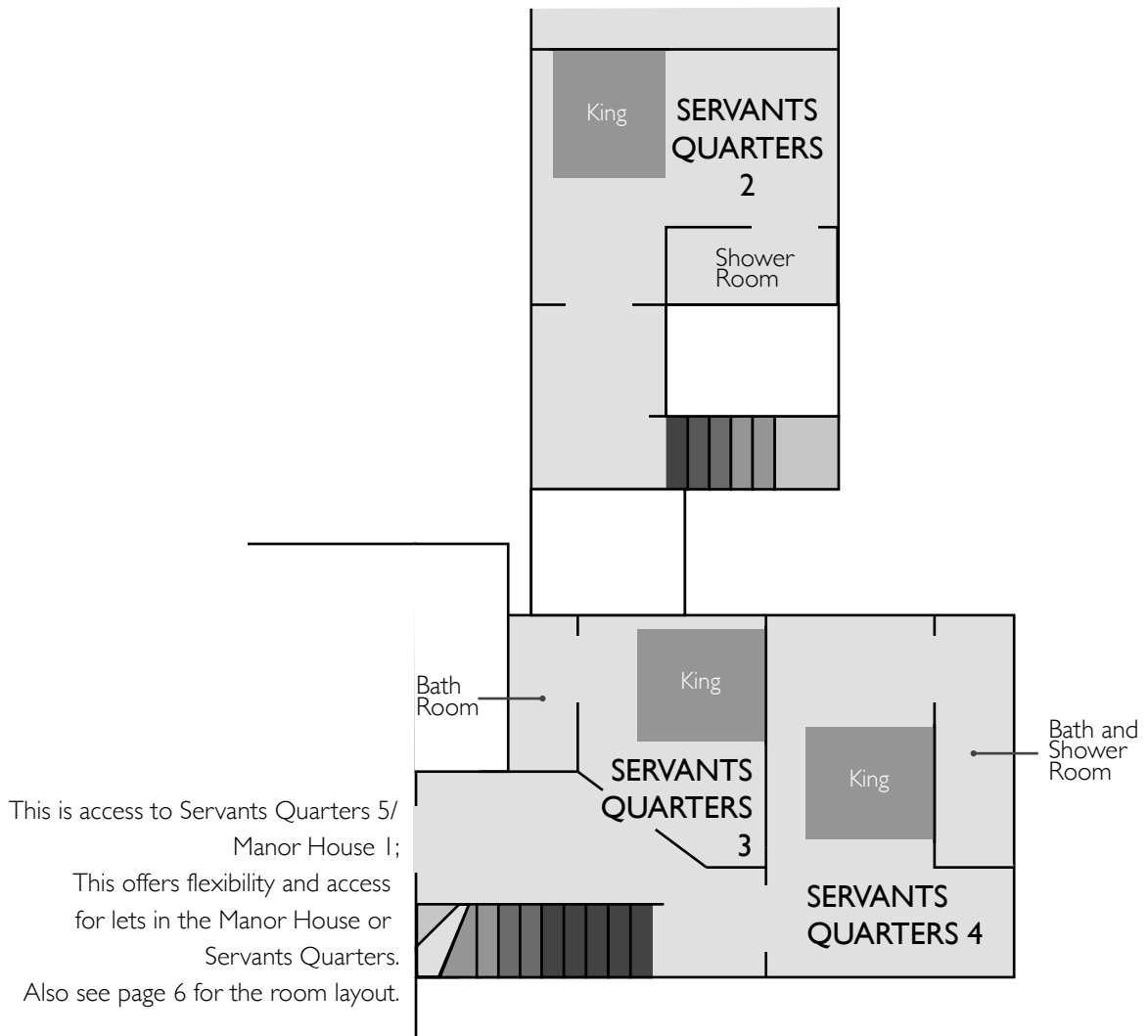


# HORNINGTON MANOR

*Yorkshire*



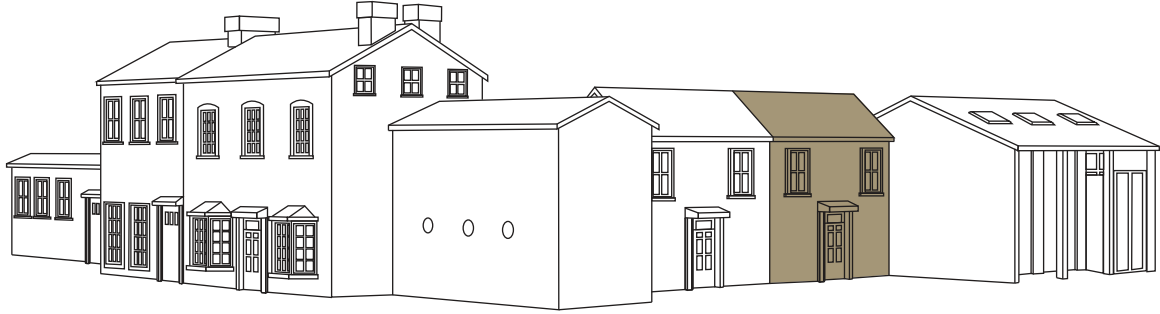
## Servants Quarters First Floor



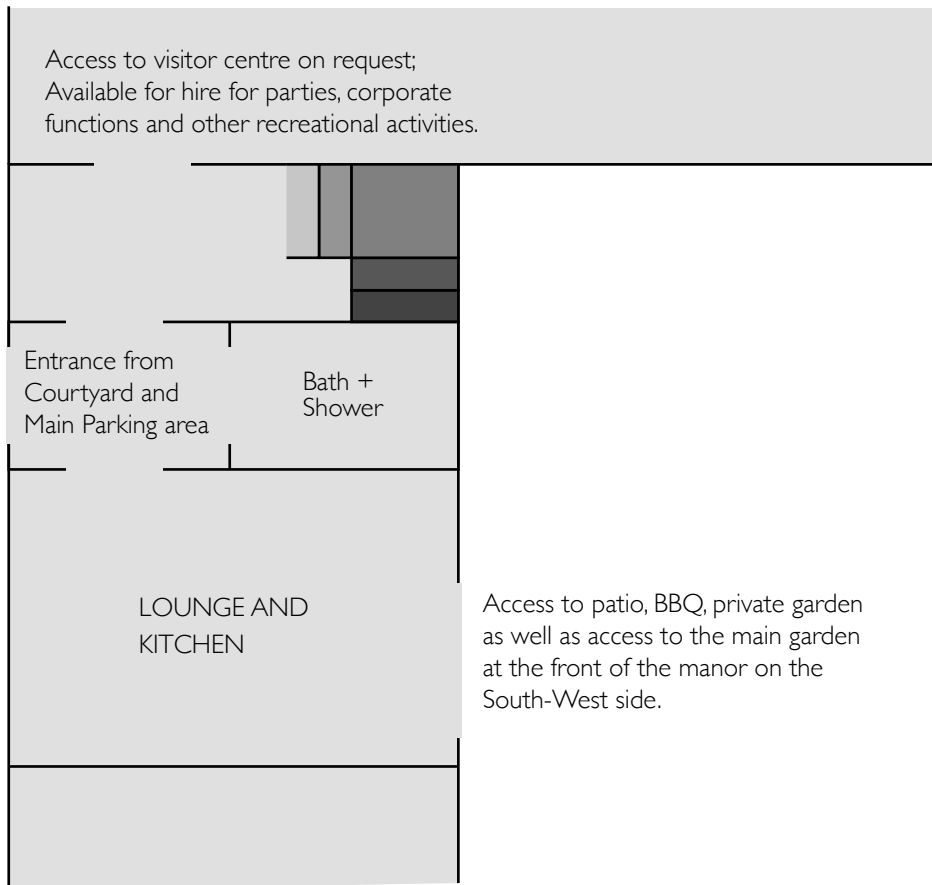


# HORNINGTON MANOR

*Yorkshire*



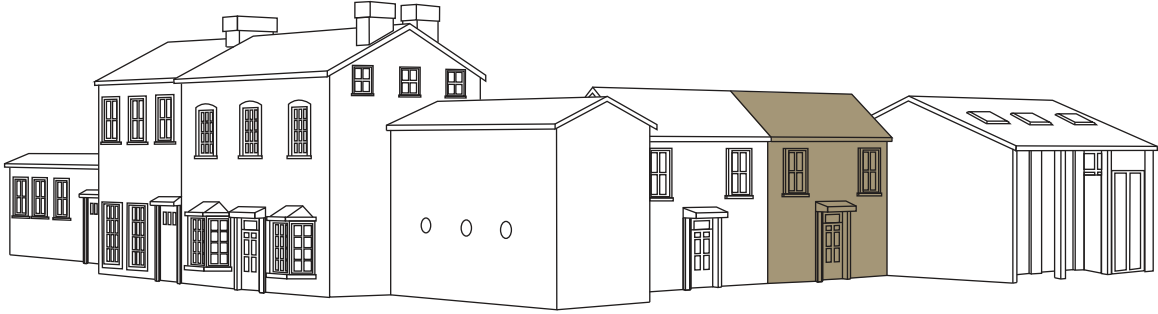
## Lodge Ground Floor



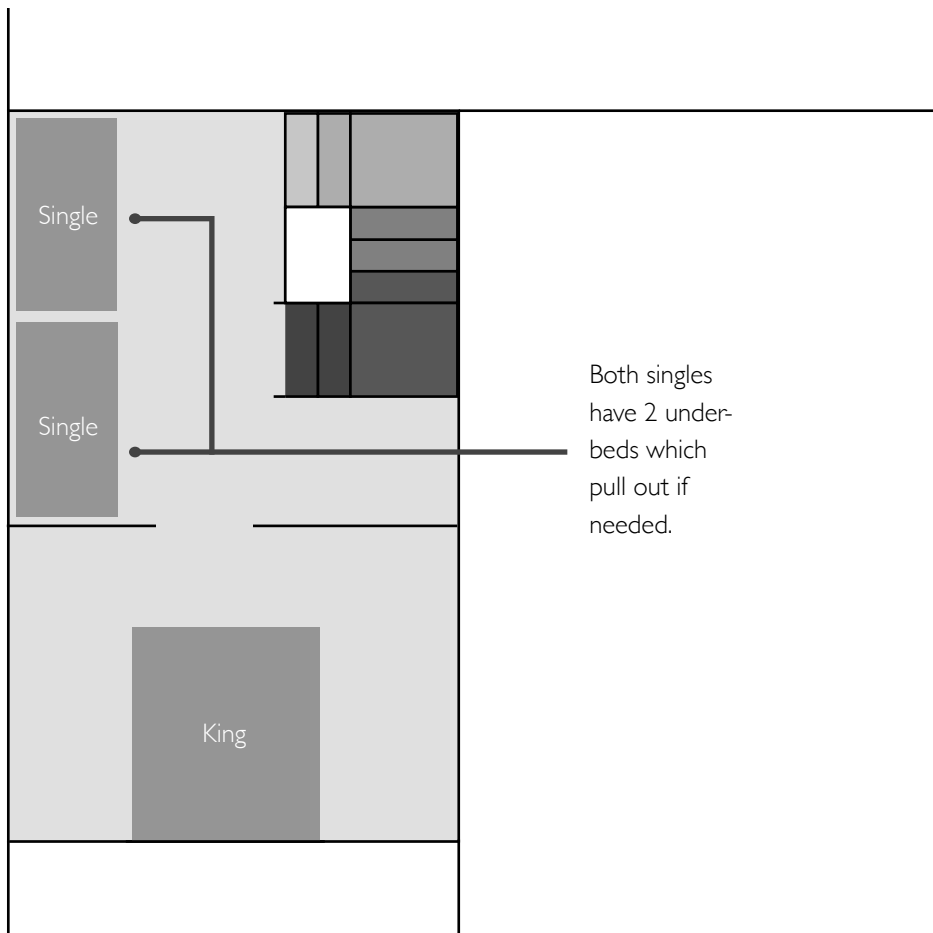


HORNINGTON  
MANOR

*Yorkshire*



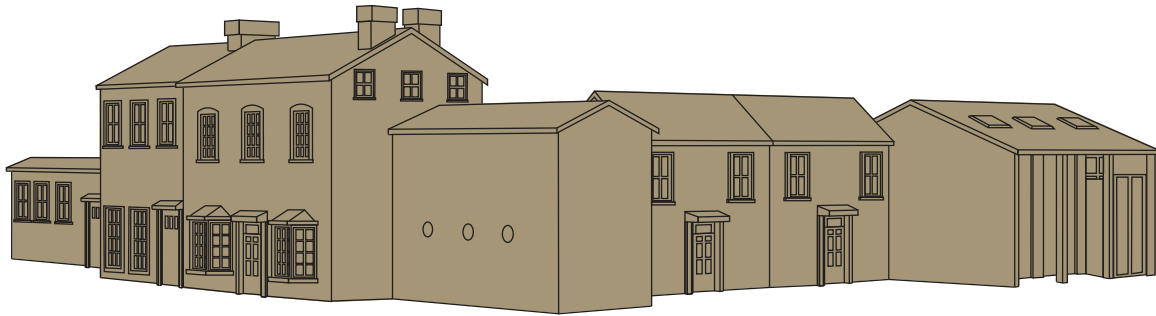
Lodge  
First Floor



  
**HORNINGTON**  
MANOR  

---

*Yorksire*



## Hornington Manor lets Overview

**Please Note** - All bedrooms have en suite bathrooms as standard.

### **The Stables**

Sleeps 3-6; 3 King bedrooms accessed via the West Wing or Courtyard. All bedrooms are on the ground floor for ease of access.

### **West Wing**

Sleeps 3-8; 1 King, 1 Super King, 1 Single twin bedroom (2 singles with pull out beds underneath if needed) 1 Fully equipped kitchen, 1 Living area with large antique table for group dining up to 16 guests.

West Wing 4/Manor house 4 is a King room that can also be used to accommodate 2 extra people (making 10 available sleeps total).

### **Manor House**

Sleeps 8-16, 2 Super-king bedrooms, 6 King bedrooms, 1 Fully equipped kitchen, 1 Lounge, 1 Snooker / dining room for group dining up to 10 guests, 1 Luxury twin shower room.

### **Servants Quarters**

Sleeps 4-8 4 King bedrooms, 1 Fully equipped kitchen with dining table seats up to 10 guests 1 lounge area.

### **Lodge**

Sleep 2-6 1 King bedroom, 1 Landing room (2 singles with pull out beds underneath if needed) 1 Fully equipped kitchen / living area.

### **All lets**

Sleeps 16-38 Rooms between the Manor House, West Wing, Servants Quarters and Lodge open up allowing the Manor to become one large house, linking communal areas and bed rooms.

From the ground floor in each section of the house there is access outside to patios, BBQs, and private gardens, see ground floor plans for each section of the Manor for access doors.

More informations found at <http://www.horningtonmanorholidaylets.co.uk>